

Inlays & Onlays

Step by Step Approach From A to Z

JULY 05-06

2-Day Workshop

Dr. Konstantina Dina Dedi
Dr. Marianna Kontopodi

EDUCATORS

14 CPD HOURS

Certificate of Attendance

Upon satisfactory completion of this Seminar & Workshop Course, participants will be awarded with 14 CPD Certified hours.

CPD
CERTIFIED
The CPD Certification Service

2025



Organized by

**INSTITUTO
MEPIMNA**
ΚΕΝΤΡΟ
ΔΙΑ ΒΙΟΥ
ΜΑΘΗΣΗΣ

Trainers

Dr. Konstantina Dina Dedi

DipDS, MS Cert in Prosthodontics (USA), FACP
Diplomate American Board of Prosthodontics
Specialist in Prosthodontics Fellow, American
College of Prosthodontics Fellow,
International Team of Implantology
Principal Clinical Teaching Fellow, Director
Aesthetic Dentistry Programmes,
UCL Eastman Dental Institute



Konstantina Dina Dedi qualified in Athens Greece in 1994 and after two years of private practice, she moved to USA. for full-time training. She was awarded the USA. Specialization Degree in Prosthodontics (Combined Crown and Bridge Removable and Implant Prosthodontics) in 1997 and the Master of Science in Oral Biology (MSc) Degree in 1999 from the University of Missouri Kansas City School of Dentistry in USA. as well as a degree in Maxillofacial Prosthetics and Dental Oncology in 1998 from the University of Texas Houston MD Anderson Cancer Center in U.S.A. She then completed a one year dental teaching fellowship at the University of North Carolina School of Dentistry USA.

Prior to her current appointment at UCL Eastman Dental Institute, she held the appointments of Clinical Assistant Professor in Prosthodontics, Director of Removable Prosthodontics Clinics and Director of the ITI Scholarship Program in the Prosthodontic Department of the University of North Carolina School of Dentistry in USA Ms Dedi was awarded the prestigious "Diplomate" specialty status from the American Board of Prosthodontics in 2002. She has been elected a Fellow of the International Team of Oral Implantology (ITI) and the American College of Prosthodontics and she held memberships in the Academy of Osseointegration, the International College of Prosthodontics and currently the American Dental Society of London.

In her previous appointment with UNC School of Dentistry, Ms. Dedi had been teaching in the postgraduate specialty programs of Prosthodontics and Implant dentistry, she was the course leader of the Removable Partial Denture undergraduate preclinical course and she was involved in several continuing professional development courses. She has presented numerous lectures and continuing education courses in U.S.A., Europe and the Middle East on anterior aesthetics and immediate loading of dental implants.

Dina's main research areas of interest are: Dental Implants Immediate Loading and Anterior Implant Aesthetics. She practices in London's West End and her private practice interests include aesthetic dentistry, dental implants, fixed and removable prosthodontics, full-mouth rehabilitation and all-ceramic restorations.

Dr. Marianna Kontopodi

Visiting Lecturer, UCL Eastman Dental Institute



Marianna Kontopodi graduated from Dental School of the Aristotle University of Thessaloniki in 2005. September

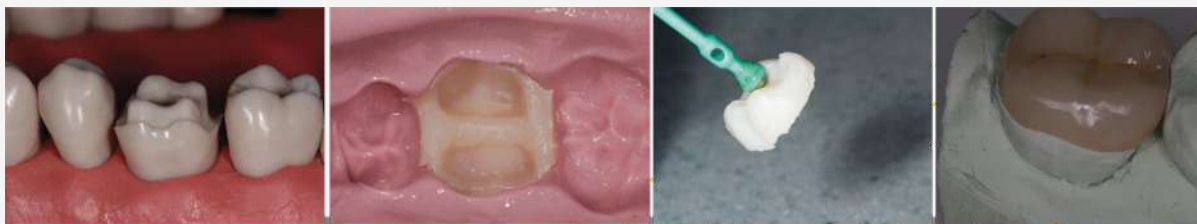
of the same year she moved to England where she worked as a general dentist in private practice in Brighton and London. In 2006 she continued her studies at New York University, College of Dentistry and completed her Masters in Aesthetic Dentistry in July, 2008.

September of the same year she moved to London, where in addition to her work as an aesthetic dentist she

worked as a guest lecturer with Eastman Dental Institute, (UCL) in the field of cosmetic dentistry. Since 2010, Marianna Kontopodi lives and works in Athens and Crete and participating as a lecturer at seminars in Aesthetic dentistry in Greece and abroad.

This course aims to discuss:

- Indications for aesthetic inlays and onlays versus direct restorations or crowns.
When do we chose onlays? Onlays and endodontically treated teeth.
- Materials for inlays-onlays: Ceramic options versus indirect composite.
- Step by step preparations for onlays. Required burs.
- Predictable Impressions: Materials and technique.
- Step by step temporaries for onlays.
- Cementation of ceramic and composite onlays:
- Step by step technique and materials required.



Program

Saturday

A.M: 9:30AM-13:00

Lectures:

Treatment Planning for Inlays-Onlays, Indications, Materials and their properties (What to use, what NOT to use), Step by step preparations and required armamentarium.

Pulp protection in deep restorations.

Impressions, impression materials and technique.

Temporisation: Materials and temporary fabrication and fit.

P.M.: 14:00-17:00

Hands On Exercise on Bespoke Models:

Preparations for inlays-onlays. Impressions. Temporaries.

Sunday

A.M: 9:30AM-13:00

Lectures:

Fit and Cementation of Inlays-Onlays. Required Materials and Armamentarium. Polishing Ceramics.

CAD/CAM Options. Intraoral Scanners and the possibilities in Troubleshooting.

P.M.: 14:00-17:00

Hands On Exercise:

Fit and Cementation of Onlays(Two protocols).

Polishing Ceramic Adjustments.

Treatment Planning Exercise of Two Challenging Cases.



CPD
CERTIFIED
The CPD Certification
Service

General Information

visit our website

www.merimnaseminars.gr

Location: Merimna Institute, Athens, Greece

Tuition fees: 450 €

Dates: July 05-06, 2025

Certificate of Attendance: Upon satisfactory completion of this Seminar & Workshop Course, participants will be awarded with 14 CPD Certified hours.

For more information and registrations:

Merimna Institute,

272A Vouliagmenis Avenue, Agios Dimitrios, Athens, GREECE

E-mail: info@merimnaseminars.gr

Tel.: 210 97 34 000